

# Emergency Response/Debris Management

Dwayne Day  
Homeland Security Planner

# Transportation Management Center (TMC)

- 24/7 Statewide Operation
- Coordinates and Manages DeIDOT's response to any incident or event that impacts Delaware's transportation system
- Monitors and Controls all ITMS intelligent transportation systems (Traffic Signals, Variable Message Signs, Traffic Cameras, Vehicle Counting Devices, Weather Stations, etc)
- Incident and Emergency Management Planning and Operations
- Homeland Security Planning and Operations

# Transportation Management Center



# Statewide Emergency Operations Center -Smyrna

The State EOC includes:

Delaware Emergency Management Agency (DEMA)

Delaware State Police

DeIDOT's Transportation Management Center (TMC)



# Scenario – Category 3 Hurricane – Pre Landfall

- Activate the Rehoboth Room - TMC Management Staff go into 24-hour shifts
- Monitor the Weather
- Bridge Calls
  - DeIDOT Internal Bridge Calls
  - DEMA Bridge Calls
  - Delmarva Emergency Task Force (DETF) Bridge Calls
- Schedule Emergency Response Units (ERU)
- Emergency Support Coordinators (ESC) activated with DEMA
- Debris Management Team Coordinates (DeIDOT, DEMA, DNREC)

# Rehoboth Room inside the TMC



Where centralized monitoring, control and command of a situation is performed.

The TMC coordinates DeIDOT's response to events such as hurricanes, floods, and snowstorms.

# Hurricane Landfall

- ERU and Yard trucks providing live feeds into the TMC
- ESC's are monitoring WebEOC for tasking from DEMA for support
- Weather is continuously monitor from multiple sources.
  - Hydrology stations are monitored for back bay flooding
  - High tide cycles...especially over 3 high tides
  - Wind direction, along with sustained speed and gusts
  - Ocean surge and beach erosion
- 4-hour reports on the status of the transportation system
- Incident Management reports for major accidents/incidents
- Evacuation requests....usually happens in the middle of the night
- Public Messaging – WTMC 1380, Twitter, Facebook, AM/FM Radio, Community Relations press releases.



# New Truck Camera and MARWIS Unit



# Post Landfall

ESC's still monitor the WebEOC for taskings from DEMA

Damage reports come in to the TMC

Damage Assessment Teams (DATs) are sent out to gather pictures and videos....this is primarily done with the drone teams.

Districts start clearing their primary roads

TMC starts to get request for Debris clean-up from DEMA and the County Emergency Managers

If the Debris clean-up exceeds the capabilities of the County and DeIDOT then the Debris Management Plan will be activated....by DeIDOT



---

## Breenan and Amberwood Developments

---

Look at the blue tarps on  
the roofs...the path of the  
tornado.

The Debris Management Plan will be activated....by DeIDOT?

Is that correct...why DeIDOT

Here is why?

# Delaware Emergency Management Agency

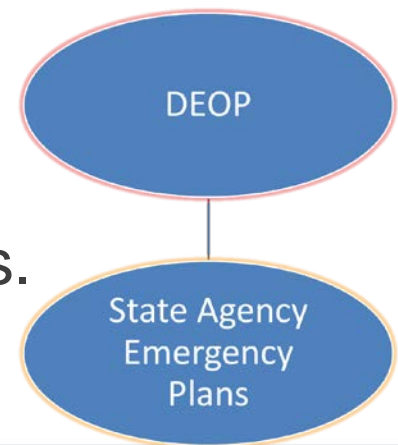
The Delaware Emergency Management Agency (DEMA) is the lead state agency for coordination of comprehensive emergency preparedness, training, response, recovery and mitigation services in order to save lives, protect Delaware's economic base and reduce the impact of emergencies.

- All State agencies are required to provide DEMA with any and all personnel, equipment, facilities, materials, or other assets during any period of disaster, emergency, or threat to include the period of recovery

Title 20—Governor may delegate authority to Secretary of Public Safety, Director of DEMA, or such other person.

# Delaware Emergency Operations Plan

- DEMA has developed the Delaware Emergency Operations Plan (DEOP) establishes the framework through which the State of Delaware prepares for, responds to, and recovers from the impacts of a wide variety of disasters and emergencies that could adversely affect the state or its citizens.
- This is a strategic plan in that it provides a broad context for the delivery of emergency response and recovery services within Delaware.
- Operational and tactical guidance may be found in a variety of other plans and documents developed by the Delaware Emergency Management Agency (DEMA) and other state agencies.



# DeIDOTs Emergency Operations Plans

- Salem and Hope Creek Nuclear Generating Stations Traffic Operations Plan
- All Hazards Evacuation Plans
- All Hazards Evacuation Plan for Individuals Requiring Special Transportation Assistance
- Christiana Mall Emergency Transportation Management Plan
- Delaware Transit Corporation Plan
- Snow Emergency Plan
- Snow Emergency Operations Manuals (M&O Districts)
- Bridge Closure Plan
- Toll Plaza Modified Operations Plan
- Dover Air Force Base Incident Plan
- Dover International Speedway Evacuation Plan
- Firefly Event Plan
- Continuity of Operations Plan (COOP)
- Fuel Locations Map
- Debris Management Plan

# Delaware Emergency Operations Plan (DEOP)

Delaware Emergency Operations Plan Operations Section Responsibilities Matrix	OPERATIONS SECTION	Emergency Services Branch	Law Enforcement Group	Fire & Rescue Group	HazMat Group	EMS Group	Infrastructure Branch	Public Works Group	Building & Codes Group	Agriculture Group	Transportation Group	Energy Group	Communications Group	Financial & Econ Systems Group	Human Services Branch	Shelter Operations Group	Mass Feeding Operations Group	Public Health & Medical Group	Animal Operations Group	Recovery & Mitigation Branch	Public Assistance Group	Debris Management Group	Individual Assistance Group	Mitigation Group	Long-Term Recovery Group
	<b>ALL STATE AGENCIES</b>																					X			X
Dept of Nat Resources & Envmtl Control																									
Boiler Safety Office									S																
Division of Air & Waste Management			S	L						S								S				S			
Division of Fish and Wildlife			S	S						S								S							
Division of Parks & Recreation			S	S															S			S			
Division of Soil & Water Conservation								S	S		S								S			S		S	
Division of Water Resources								L										S						S	
State Energy Office												L													S
Dept of Safety & Homeland Security																									
Capitol Police			S																						
Delaware State Police			L	S		S					S														
Developmental Disabilities Council																S									
Div of Alcohol & Tobacco Enforcement			S																						
Dept of Svcs for Children, Youth & Families			S													S	S						S		
Department of State																									
Banking Commissioner's Office														L											
Office of Historical & Cultural Affairs									S												S	S		S	
Department of Technology & Information													S												
Department of Transportation				S					S		L										S	L	S		S
Office of Management & Budget																									
Budget Development Office																									S
Division of Facilities Management									S												S				
Division of Government Support Services																									
Food Distribution Section																	S								



- Transportation Group:

The mission of the Transportation Group is to ensure the integrity of the state's transportation infrastructure. This includes roadways, railways, airports, marine ports and their related components.

- Debris Management Group:

The mission of the Debris Management Group is to facilitate and coordinate the removal, collection, and disposal of disaster-related debris following an incident.

# Debris Management Plan

- Plan consists of three parts
  - Base Plan (first 62 pages)
  - Appendices (next 138 pages)
  - Delaware Marine Debris Emergency Response Guide (52 pages)



# Debris Management Primary Agencies

- Office of the Governor
- Delaware Emergency Management Agency (DEMA)
- Delaware Department of Transportation (DelDOT)
- Department of Natural Resources and Environmental Control (DNREC)
- Delaware State Fire School
- Delaware National Guard (DNG)
- County Government (County EMAs)
- Local Government
- State Historic Preservation Office (SHPO)
- Public Utilities
- Department of Agriculture

# DeIDOT DEBRIS MANAGER

- DeIDOT will appoint a Debris Manager to oversee, monitor, and report on debris activities. The Debris Manager will:
- Be responsible for the full implementation of this plan, and for the daily operation and control of the debris cleanup, debris management sites, and all debris staff.
- Work with the Transportation Management Center (TMC) to facilitate the removal, collection, and disposal of debris.
- Coordinate with other state and local agencies to facilitate the collection, sorting, removal, and final disposition of debris during a disaster.

# Debris Management Plan

The intent of the Debris Management Plan is to:

- Facilitate and coordinate the removal, collection, and disposal of debris following a disaster
- Expedite recovery efforts in the impacted area, and
- Meet the requirements for federal reimbursement.



- DeIDOT will clear Primary, Secondary and Tertiary state-maintained roads as soon as practical.
- The State resources will support local authorities when their resources are overwhelmed or anticipated to be overwhelmed. County Emergency Managers should work with DEMA if they need state resources to clean up storm related debris on county or state-owned property.
- The state will avoid if possible, cleaning up any debris on privately owned property that is not in the public interest to eliminate immediate threats to life, public health, or safety.
- County Emergency Managers should discourage homeowners from putting storm debris at the curb with the intent that the state resources will be used to remove it.
- It is the homeowner's financial responsibility to have any storm debris removed off their property by themselves or a private contractor.

# Clearing Priorities

- DeIDOT will identify the clearance priorities in order to efficiently clear debris from at least one lane on all evacuation routes and identified primary and secondary roads to expedite the movement of emergency service vehicles such as fire, police, and medical responders.
- Interstate, controlled access roadways, and divided highways will be the next priority with a minimum of one lane cleared in each direction. This includes I-95, I-295, I-495, US 13, US 40, US 113, US 202, US301, and DE 1. Any remaining Primary Arterials will also be cleared.

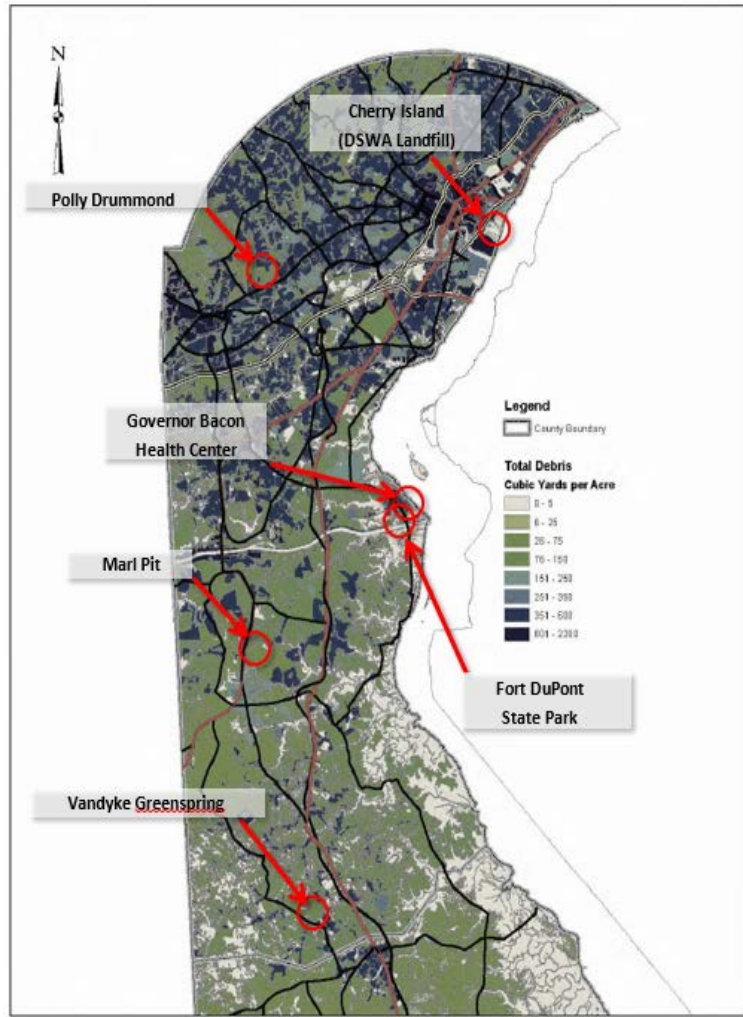
During most events existing landfills can be used to process the debris.... as these locations maintain the appropriate environmental and regulatory permits and approvals.

However, major disasters, such as Category 3 hurricanes, can result in millions of cubic yards of debris, which has the potential to overwhelm local and regional landfills.

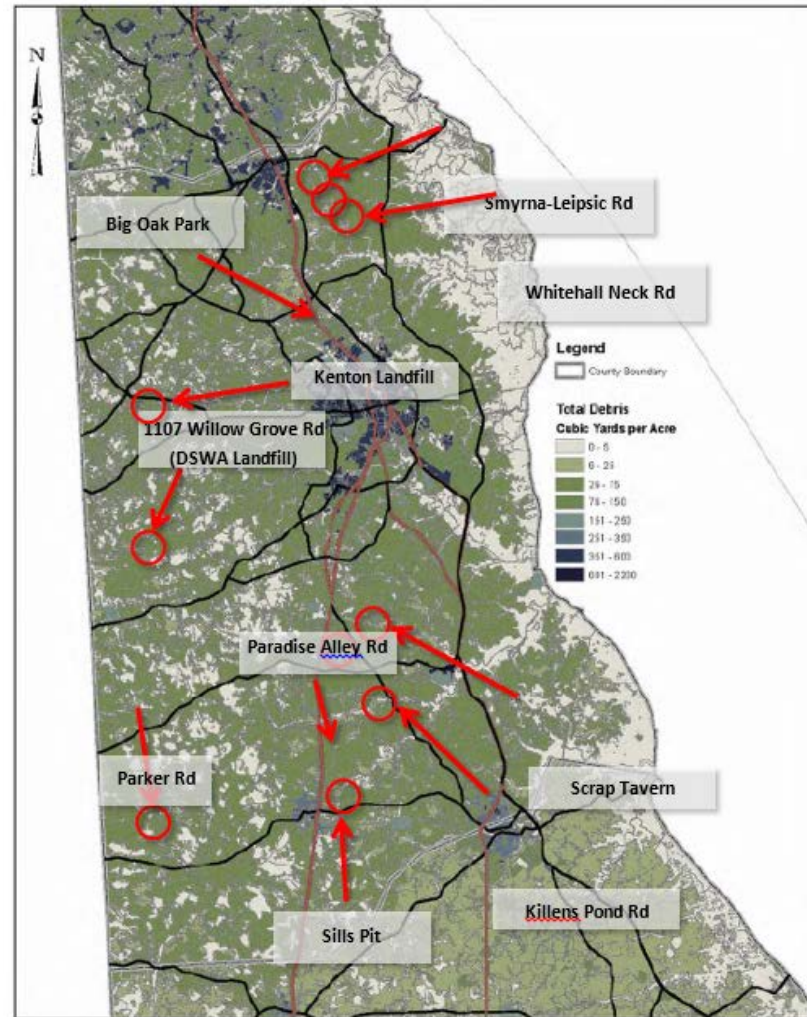
To dispose of the material safely and efficiently, temporary Debris Management Sites (DMS) may be required to process the volume of debris. The purpose of the DMS will be to sort, reduce, recycle, and process the debris prior to its ultimate disposal.



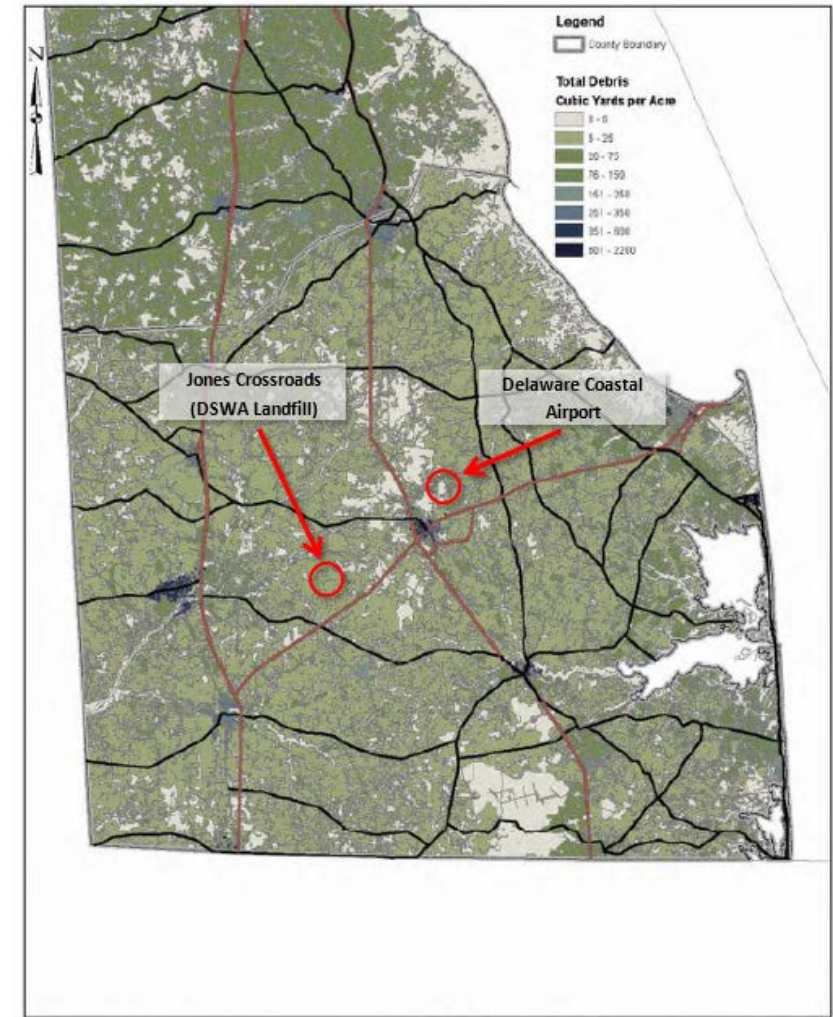
# County Based Potential DMS Location Maps



New Castle County 0 1.5 3 6 9 12 Miles OR&A

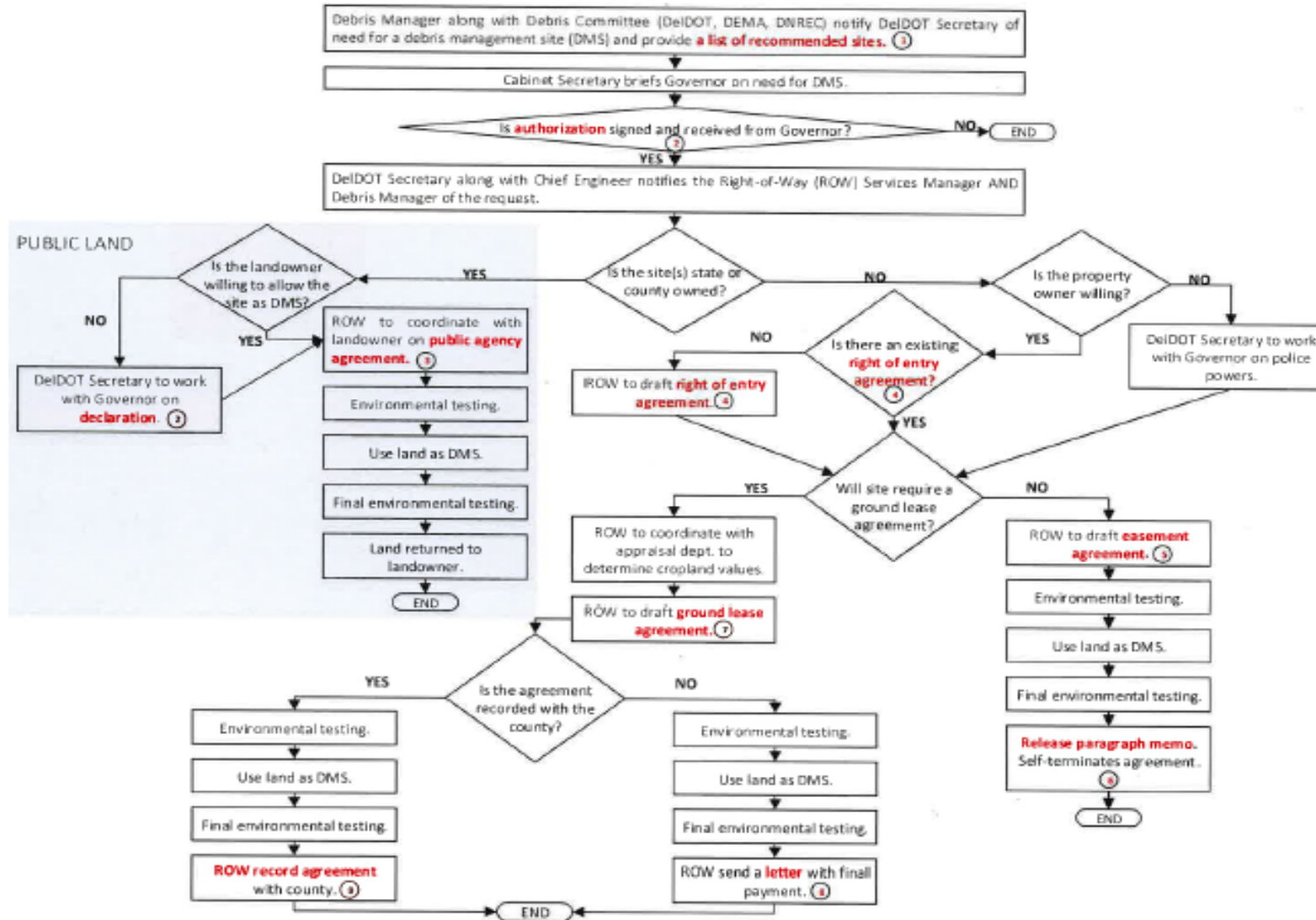


Kent County 0 1.5 3 6 9 12 Miles OR&A



Sussex County 0 1.5 3 6 9 12 Miles OR&A

# Activating a DMS Flow Chart



# Delaware Marine Debris Emergency Response Guide

- Developed by the National Oceanic and Atmospheric Administration - June 2020.
- Response and recovery operations following a debris incident—either natural or man-made—that results in the release of large amounts of waterway debris.
- The document outlines existing response structures at the local, state, and federal levels to facilitate a coordinated, well-managed, and immediate response to waterway debris incidents impacting the state of Delaware.



# Delaware Waterway Debris Response Flowchart

**Waterway Debris/Incident Waterway Debris**  
Any solid material, including but not limited to vegetative debris and debris exposed to or that has the potential to release oil, hazardous substances, pollutants, or contaminants, that enters a waterway following an acute incident and poses a threat to the natural or man-made environment. This may include shoreline and wetland debris and debris in some inland, non-tidal waterways.

## Acronyms

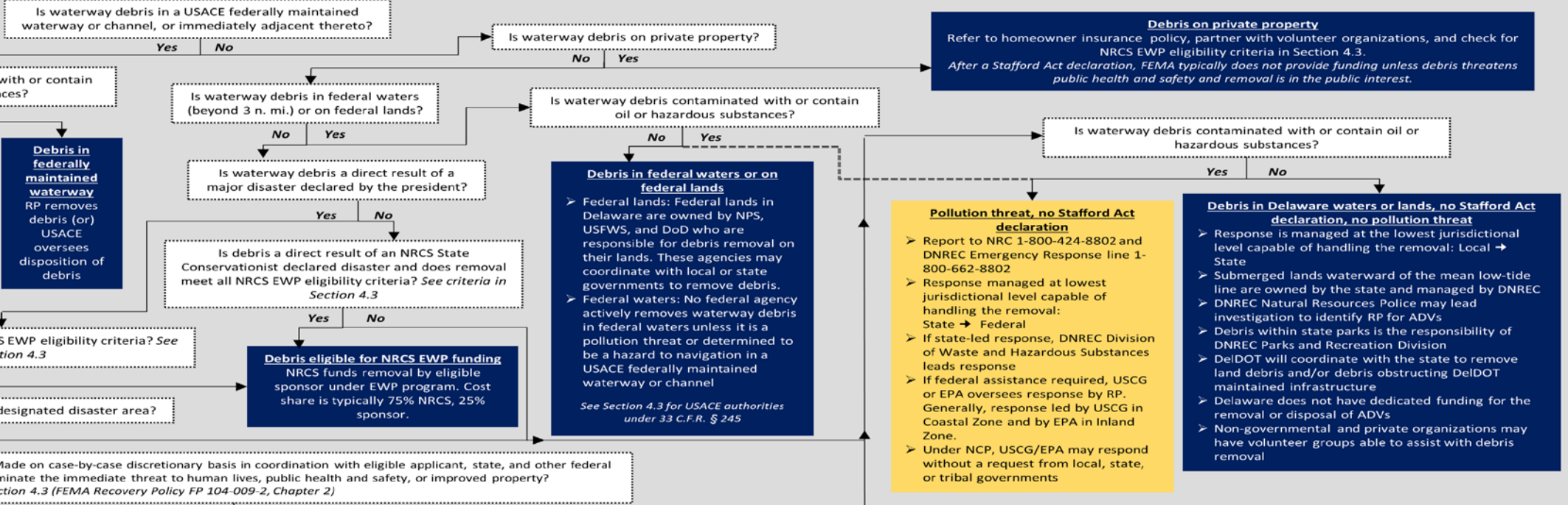
ADV – Abandoned and Derelict Vessel  
DelDOT – Delaware Department of Transportation  
DEMA – Delaware Emergency Management Agency  
DNREC – Delaware Department of Natural Resources and Environmental Control  
DoD – U.S. Department of Defense

EPA – U.S. Environmental Protection Agency  
ESF – Emergency Support Function  
EWP – Emergency Watershed Protection  
FEMA – Federal Emergency Management Agency  
NCP – National Oil & Hazardous Substance Contingency Plan

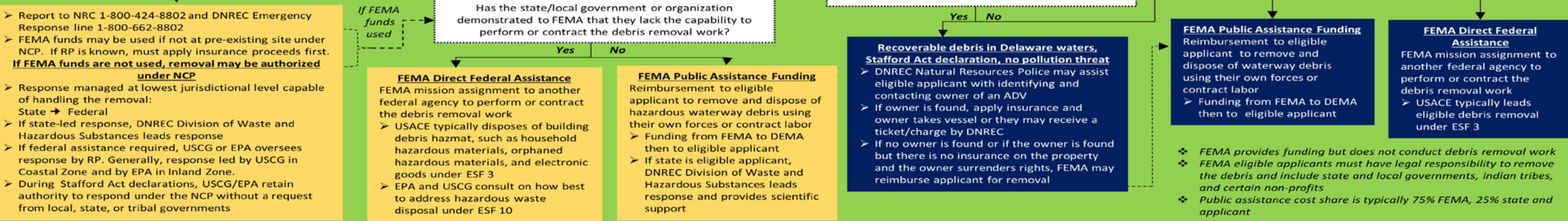
NPS – National Park Service  
NRC – National Response Center  
NRCS – Natural Resources Conservation Service  
RP – Responsible Party (Owner, Operator, Lessee)  
USACE – U.S. Army Corps of Engineers  
USCG – U.S. Coast Guard  
USFWS – U.S. Fish and Wildlife Service

Flowchart Key	Response to waterway debris that is exposed to or has the potential to release oil, hazardous substances, pollutants, or contaminants
	Response to waterway debris that is not exposed to and does not have the potential to release oil, hazardous substances, pollutants, or contaminants
	Response occurring under Stafford Act authorities and/or funds

**START** →



## Stafford Act Declaration



# Thank You!!



Dwayne Day  
DeIDOT Homeland Security Planner

[Dwayne.Day@Delaware.Gov](mailto:Dwayne.Day@Delaware.Gov)

(302) 659-4604